

1. MATERIALS: SEE 3015 NOTE 1.

2. WHEN EARTH CONNECTION DEVICE IS FITTED FOR USE WITH LEAD SHEATH CABLES THE MAXIMUM DIAMETER OVER LEAD SHEATH IS AS PER COLUMN 'O2' IN THE TABLE.

3. STAMPING : All glands to be stamped on the circular band in the following manner:
 HAWKE 153RAC SIZE / THREAD / ARMOUR RING TYPE / SEAL TYPE / CE
 -60+80°C IP66 OL70NA UK
 e.g. HAWKE 153RAC C / M32 / R / S / -60+80°C CE
 IP66 OL70NA UK

4. FINISH : This component may be coated or plated to suit the application.

5. OPERATING TEMPERATURE : The standard operating temperature range for this gland is -60°C to +80°C.

6. SPECIFICATION : In accordance with the relevant requirements of (EN 50262).

7. CABLE AND ARMOUUR : This gland is suitable for the following Elastomer or Plastic insulated cables:- single steel wire, single aluminium wire, single and double tape armour, braided and unarmoured.

8. VARIATIONS : Alternative gland body can have larger external dimensions with respect to the male coupling thread that are equal or larger to those shown in the table.

9. AN OPTION TO USE THE DELUGE BOOT, 3000, IS AVAILABLE FOR IMPROVED SEALING.

GLAND TYPE	BS EN 50262 - GLAND CLASSIFICATION															
	MATERIAL	MECHANICAL PROPERTIES			ELECTRICAL PROPERTIES			EXTERNAL INFLUENCES			SEALING SYSTEM					
153 DIA. RAC	METAL	NON-METALIC	COMPOSITE	WITHOUT CABLE ANCHORAGE	WITH CABLE ANCHORAGE	IMPACT CATEGORY	CABLE RETENTION (ARMOURD CABLE)	SOLIPOTENTIAL BONDING	CONNECTION TO METAL LAYERS	PROTECTIVE CONNECTION TO EARTH	INSULATION CHARACTERISTICS	INGRESS PROTECTION	TEMPERATURE RANGE	RESISTANCE TO SALT AND SULPHUR DIOXIDE (ADEN ATMOSPHERES)	SINGLE ORIFICE SEAL	MULTI ORIFICE SEAL
	Y			X	A	B	B	Y	Y	C	X	Y	Y	Y	Y	X

SIZE REF.	'K'	'L'	'M' THREAD SIZES				'P' THREAD LENGTHS				'O' INNER SHEATH		OUTER SHEATH		'V' ARMOUR (3041 STD, 3142 Alt (R))								
			Parallel threads are medium fit or better																				
			Metric Conduit	Imperial Conduit	Pg	BSPP BSPT	NPT	NPSM	Metric Imperial Pg	BSPP	BSPT	NPT	NPSM	O1 (3111) SEAL		O2 SEAL WITH 3045 FITTED	'N'	'U'					
Os	24.0	27.7	M16	3/4"	13.5 or 11.0	1/2"	1/2"	1/2"	15.0	15.0	18.6	19.9	15.0	8.0	4.0		12.0	5.5	81.0	0-0.7 XYZ 0.9-1.25 W	0.4-0.8 XYZ 0.8-1.0 W		
			M20																				
O	24.0	27.7	M16	3/4"	13.5 or 11.0	1/2"	1/2"	1/2"	15.0	15.0	18.6	19.9	15.0	11.9	7.5	8.5	7.5	16.0	9.5	81.0	0-0.7 XYZ 0.9-1.25 W	0.4-0.8 XYZ 0.8-1.0 W	
			M20																				
A	30.0	34.6	M20	3/4"	16.0	1/2"	1/2"	1/2"	15.0	15.0	18.6	19.9	15.0	14.2	11.5		20.5	12.5	83.0	0-0.7 XYZ 0.9-1.25 W	0.4-0.8 XYZ 0.8-1.0 W		
						3/4"	3/4"	3/4"															
B	36.0	41.6	M25	1"	21.0	1"	1"	1"	15.0	15.0	20.0	20.2	15.0	20.1	13.7	16.7	13.7	26.0	16.9	95.0	0-0.7 XYZ 1.25-1.6 W	0.5-0.9 XYZ 0.9-1.25 W	
						1"	1"	1"															
C	46.0	53.1	M32	1 1/4"	29.0	1 1/4"	1 1/4"	1 1/4"	15.0	15.0	20.0	23.7	25.0	20.0	26.4	19.6	22.5	19.6	33.0	22.0	98.0	0-0.7 XZ 1.6-2.0 W	0.6-1.2 XZ 1.2-1.6 W
						1 1/4"	1 1/4"	1 1/4"															
C2	55.0	63.5	M40	1 1/2"	36.0	1 1/2"	1 1/2"	1 1/2"	15.0	15.0	20.0	26.0	26.0	20.0	32.4	26.0	28.5	26.0	41.0	28.0	105.0	0-0.7 XZ 1.6-2.0 W	0.6-1.2 XZ 1.2-1.6 W
						1 1/2"	1 1/2"	1 1/2"															
D	65.0	75.1	M50	2"	42.0	2"	2"	2"	15.0	15.0	20.0	30.3	26.0	20.0	42.3	30.0	40.3	31.5	52.6	36.0	133.0	0-1.0 XZ 1.8-2.5 WY	1.0-1.45 XZ 1.45-1.8 WY
						2"	2"	2"															
E	80.0	92.4	M63	2 1/2"	48.0	2 1/2"	2 1/2"	2 1/2"	15.0	15.0	20.0	33.6	26.9	20.0	54.0	41.5	52.0	42.0	65.3	46.0	126.0	0-1.0 XZ 1.8-2.5 WY	1.0-1.45 XZ 1.45-1.8 WY
						2 1/2"	2 1/2"	2 1/2"															
F	95.0	109.6	M75	3"	54.0	3"	3"	3"	15.0	15.0	20.0	36.8	26.9	20.0	65.3	53.0	63.8	54.5	78.0	57.0	134.0	0-1.0 XZ 1.8-2.5 WY	1.0-1.45 XZ 1.45-1.8 WY
						3"	3"	3"															

A2 THIS IS A CAD DRAWING AND MUST BE EDITED AT SOURCE

HAWKE
 HAWKE CABLE GLANDS LTD 1999
 OXFORD ST WEST
 ASHTON-U-LYNE
 OL7 0NA
 TEL: +44 (0)161 308 3611

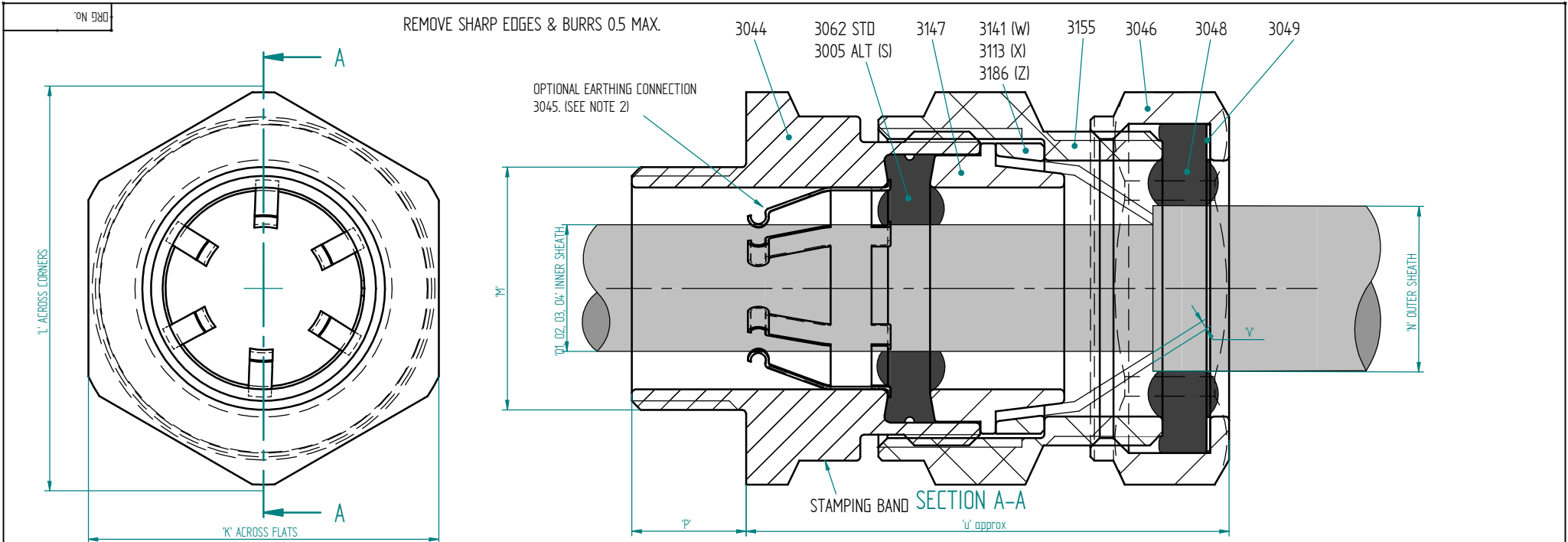
ALL COPYRIGHT RESERVED
 THIS DRAWING AND ALL COPYRIGHT THEREIN IS THE PROPERTY OF HAWKE CABLE GLANDS LTD.
 (A Subsidiary of HAWKE UK Limited)
 COPYRIGHT CONDITION: THIS DRAWING SHALL BE USED ONLY FOR THE PURPOSES FOR WHICH IT IS PROVIDED AND NO REPRODUCTION OR MODIFICATION OF THIS DRAWING MAY BE MADE OR COMMENCED WITHOUT THE PRIOR WRITTEN CONSENT OF THE OWNER.
 REMOVE ALL BURRS AND SHARP EDGES USING MINIMUM CHAMFER OR RADIUS. PARTICULARLY REMOVE ALL BURRS FROM START AND FINISH OF THREADS.

3RD ANGLE PROJECTION
 DO NOT SCALE IF IN DOUBT ASK
 GENERAL TOLERANCES
 LINEAR
 ANGULAR
 UNLESS OTHERWISE STATED

DATE/SIG	A.O.	HCG01/012	A
DATE/SIG	DCN	ISSUE	
FIRST ISSUE			
MODIFICATION			

DRN	BR	TITLE
CHD	A.O.	GENERAL ARRANGEMENT OF TYPE 153 RAC.
DATE	02/05/01	
UNITS	mm	

DRG. No.	153 RAC
SCALE	N.T.S.
SHEET	1 OF 1



1. MATERIALS: SEE 3015 NOTE 1.

2. WHEN EARTH CONNECTION DEVICE IS FITTED FOR USE WITH LEAD SHEATH CABLES THE MAXIMUM DIAMETER OVER LEAD SHEATH IS AS PER COLUMN 'O3' AND 'O4' IN THE TABLE.

3. STAMPING : All glands to be stamped on the circular band in the following manner:

HAWKE 153 SIZE / THREAD / ARMOUR RING TYPE / SEAL TYPE / -60+100°C

IP66 0L70NA UK

e.g. HAWKE 153 C / M32 / W / S / -60+100°C / IP66 / 0L70NA UK

4. FINISH : This component may be coated or plated to suit the application.

5. OPERATING TEMPERATURE : The standard operating temperature range for this gland is -60°C to +100°C.

6. CABLE : This gland is suitable for the following Elastomer or Plastic insulated cables- single steel wire, single aluminium wire, single and double tape armour, braided and unarmoured.

7. VARIATIONS : Alternative gland body can have larger external dimensions with respect to the male coupling thread that are equal or larger to those shown in the table.

8. AN OPTION TO USE THE DELUGE BOOT, 3000, IS AVAILABLE FOR IMPROVED SEALING.

SIZE REF.	'K'	'L'	'M' THREAD SIZES Parallel threads are medium fit or better				'P' THREAD LENGTHS					CABLE				'U'	V' ARMOUR				
			Metric Conduit	ET	BSPP BSPT	NPT	NPSM	Metric ET	BSPP	BSPT	NPT	NPSM	'O' INNER SHEATH		'N' OUTER SHEATH		(3141) SWA (W)	(3113) BRAID (X)	(3186) STRIP/ TAPE (Z)		
													O1 (3062) SEAL	O3 SEAL WITH 3045 FITTED	MAX					MIN	MAX
G	106.4	123.0	M80	3 1/4"			15.0					73.0	67.0	68.5	67.0	89.5	75.0	121.0	3.15	0.3/0.45	0.4 or 0.8
H	115.0	132.8	M90	3 1/2"	3 1/2"	3 1/2"	15.0	20.0	38.4	42.8	20.0	77.6	67.0	73.1	67.0	89.5	75.0	121.0	3.15	0.3/0.45	0.4 or 0.8
J	127.0	146.7	M100	4"	4"	4"	15.0	20.0	42.8	44.0	20.0	91.6	75.0	87.1	75.0	104.5	88.0	121.0	4.0	0.3/0.45	0.4 or 0.8

A2 THIS IS A CAD DRAWING AND MUST BE EDITED AT SOURCE

 HAWKE CABLE GLANDS LIMITED OXFORD ST WEST ASHTON-U-LYNE OL7 0NA TEL: +44 (0)161 308 3611	ALL COPYRIGHT RESERVED HAWKE CABLE GLANDS LTD 1999 THIS DRAWING AND ALL COPYRIGHT THEREIN IS THE PROPERTY OF HAWKE CABLE GLANDS LTD. IN SUBSIDIARY OF HAWKE UK LIMITED COPYRIGHT CONDITION: THIS DRAWING SHALL BE USED ONLY FOR THE PURPOSES FOR WHICH IT IS PROVIDED AND NO REPRODUCTION OR PUBLICATION OF THIS DRAWING MAY BE MADE AND NO PART THEREOF MAY BE MANUFACTURED OR ASSEMBLED IN ACCORDANCE WITH THIS DRAWING WITHOUT THE PRIOR WRITTEN CONSENT OF THE COMPANY.	3RD ANGLE PROJECTION DO NOT SCALE IF IN DOUBT ASK GENERAL TOLERANCES LINEAR ANGULAR UNLESS OTHERWISE STATED	FIRST ISSUE MODIFICATION	A.O. 02/05/01 DATE/SIG HED 01/01/12 DEN A ISSUE	DRN BR CHD A.O. DATE 02/05/01 UNITS mm	TITLE GENERAL ARRANGEMENT OF TYPE 153 DEDICATED ARMOUR CLAMPING GLAND.	DRG. No. 153 Dedicated (G TO J) SCALE N.T.S. SHEET 1 OF 1
--	---	--	-----------------------------	--	---	---	--